

**Parish  
News**

# **Great and Little Maplestead Pebmarsh and Gestingthorpe**

---



**Church and Community together  
September**

**Free**

## Village contacts and information

Reverend Beverley Vincent can be found on page 32 and the churchwardens on page 30.

Village Emergency Telephone Service and Neighbourhood Watch representatives see page 30

Magazine copy see page 32

### Parish Clerks

Gt Maplestead	Ann Crisp	01787 460216	anncrisp@greatmaplesteadpc.co.uk
Lt Maplestead	Ann Harris	01787 462818	littlemaplesteadparishclerk@gmail.com
Gestingthorpe	Kevin B Money	07810 781509	gestingthorpepc@gmail.com
Pebmarsh	Shelley Boydel	07801 492312	pebmarshparishclerk@gmail.com

### The Maplesteads

WI	Carol Brownlie	01787 461527	carolbrownlie@gmail.com
WEA	Jill Newton	01787 463893	gilliannnewton4@gmail.com
Autumn Show	Carol Brownlie	01787 461527	carolbrownlie@gmail.com

### Gt Maplestead

Task Force	Martin Elms	01787 461421	martinelms@greatmaplesteadpc.co.uk
Village Hall	Liz Newton	01787 461308	lizatlucking@hotmail.com
Playing Field	Joe Newton	01787 461308	lizatlucking@hotmail.com
Mixed Ability Yoga	Victoria Ashworth	07751 911923	justinashworth@hotmail.co.uk
Pilates	Catherine Pawsey	07814 459683	catherinepawseypilates@gmail.com
Dance & Keep Fit	Judy Cowell	01376 561757	judy.cowell@btinternet.com
Carpet Bowls	Janice Chaplin	01787 469600	bobandjanicechaplin@btinternet.com
Youth Club	Myra Jeggo	01787 474285	m.jeggo@sky.com

### Gestingthorpe

Village Hall	Steve Bagby	07840 367182	
Village amenities	Nick Duncan	01787 313558	
Tower bell ringing	Valerie Fullman	01787 462755	
Cricket Club	Nick Duncan	01787 313558	
Football Club			
History Society	Gill Webb	01787 581836	gillwebb880@gmail.com

### Pebmarsh

Village Hall	Jonathan Nott	01787 269231	jonathannott44@hotmail.com
Dog Training	Halstead Dog Club	01787 473154	halsteaddogclub@hotmail.co.uk
Card making	Pauline Andow	01787 228790	
Ladies Club	Pauline Andow	01787 228790	
	Sandra Beaney	01787 222220	
Carpet bowls	Jim Crayston	01787 222241	jim@craystonfarms.co.uk
Youth club	Carol Parker	01787 269996	taximother@googlemail.com
Baby Sensory Class	Helen Whiting	07703 790273	braintree@babysensory.co.uk

### Footpaths

Gt Maplestead	Steve Harris	01787 462818	steve198harris@gmail.com
Lt Maplestead	Geraldine Holloway	01787 476530	geraldineholloway2017@gmail.com
Gestingthorpe	L Crumpton-Taylor	01787 460277	lesliecrumpton-taylor@gmail.com
Pebmarsh	Michael Sharp	07725 909986	michael@broomhills-farm.co.uk

### All villages

Book Club	Alison Cantor	01787 462537	acantor@linus.plus.com
Knitting group	Carol Brownlie	01787 461527	carolbrownlie@gmail.com
Handbell Ringing	Margaret Crudgington	01787 476259	
Solar Society	Miles Scrivens	01787 469766	lauri.scrivens@gmail.com
Benefice Choir	Gill Peskett	01787 462786	gillpeskett43@gmail.com
Scouts	Stuart Carter	01787 461149	
Guides	Kathy Hoy	01787 280200	
Molly's Wood	Jane Postma		<a href="https://www.mollyswood.org/contact">https://www.mollyswood.org/contact</a>

## Letter from the editor



As we watch the dreadful events unfold around us it becomes even more important to engage in and value our communities. I personally had a great time at the Great Maplestead Fun(d) day last week, although the dog show judges were definitely biased as my beautiful bitch, who was certainly the most beautiful at the dog show, wasn't even placed. Boo hoo. But I must congratulate the WI on the quality of their cakes.

I am also reassured that some of you do read the magazines. Having talked about the weather in my last letter, Alan Emmerson has offered to write about our local weather. He measures our rainfall. See his article on page 19.

It is also great to see that we are opening up and that there are now events in person to look forward to. Have a look at our forthcoming events list on page 31.

I am sad to lose Jan, who has been so supportive, but I welcome Luke who is taking over Jan's role in Pebmarsh.

If anyone is interested, we are thinking about a 'letters to the editor' page, but this requires you to contact me. Please do.

Also, please remember Braintree Food Bank, there are very many people who have been very badly affected by the lockdown.

With love to you all.

## Contents

---

Page 2	Village contacts and information
Page 3	Letter from the Editor
Page 4	Letter from our Vicar and the Parish News website
Page 5	Bus service
Page 6	Stories from Pets Corner
Page 7	Local companies
Page 8	Gardening Corner
Page 9-11	Gestingthorpe
Page 12	The Reading Room
Page 13	Nature Notes
Page 14-15 & 19	Pebmarsh
Page 20	A good recipe for the coming autumn/winter
Page 21-22	Little Maplestead
Page 23-27	Great Maplestead
Page 28	Hedingham Heritage Society
Page 29-30	Local information
Page 31	Foodbank
Page 32	Church services

## Letter from the Reverend Beverley Vincent

---

September is here and I wonder where the previous eight months went! I generally approach this month with a sense of expectation, rather like a new chapter of a book. I know it will herald a new season, although it's felt to me like autumn during August! It also promises a new term for schools and universities and it is when the harvest is safely gathered in. It's a time of hope, of new beginnings and possibilities.

This year though, I enter September with a heavy heart. We have endured much in the past 18 months and it will have taken its toll on our sense of well-being. Now when we are beginning to see a glimmer of light at the end of that tunnel our world news brings us the tragedy that is unfolding in Afghanistan, as we witness harrowing images on our TV screens.

We have also seen the devastation of the latest earthquake in Haiti with many lives lost and infrastructure destroyed in one of the poorest countries in the world. Then the news of wildfires in many countries causing such terrible destruction to life, homes and habitats.

Closer to home we have been shocked by events in Plymouth, the tragedy of those who lost their lives to a gunman and a community traumatised.

So how do we hold on to hope in such a broken world?

I don't have the answer, other than to say on a personal and practical level I do what I can, I support aid agencies, reduce my carbon footprint, be available to those in need in my community, help fight covid by being a vaccinator. It doesn't seem much in the greater scheme of things, but if we all do what we can I believe it changes the world. As Mother Theresa said 'I alone cannot change the world, but I can cast a stone across the waters to create many ripples.'

My hope comes from knowing the God who will accomplish good things through us and in us, and that same God is with us in the pain and mess of the here and now.

My prayer for us all today is from St Paul; May the God of hope fill you with all joy and peace as you trust in him, so that you may overflow with hope by the power of the Holy Spirit.

*Rev'd Beverley*



### **Parish News Website**

---

The Parish News website is a gateway to our four villages and their churches. The website address is:

[www.knights-hospitallers.org.uk](http://www.knights-hospitallers.org.uk)

Unlike a conventional bus, you need to first register as a customer and you need to book your seat on a journey at least two hours in advance of travel.

Flat fare £3 single, £5 return between any two stages. Concessionary bus passes are accepted after 0900 Monday to Friday and all day on Saturdays.

To get more information call Essex DaRT on 01621 874410 or email [info@essexandsuffolkdart.co.uk](mailto:info@essexandsuffolkdart.co.uk).

The latest timetables for the DaRT service at [www.essex.gov.uk/dart](http://www.essex.gov.uk/dart) is incorrect.

## SUDBURY - BULMER - GESTINGTHORPE - WICKHAM ST. PAUL - PEBMARSH - GREAT AND LITTLE MAPLESTEAD - HALSTEAD

### F315 From 01/03/2018

Sudbury, Bus Station	<b>09:00</b>	<b>11:00</b>	<b>13:00</b>	<b>15:30</b>	<b>17:30</b>	<b>19:15</b>	
Ballingdon, Kings Head	<b>09:03</b>	<b>11:03</b>	<b>13:03</b>	<b>15:33</b>	<b>17:33</b>	<b>09:18</b>	Timings in BOLD are fixed timing points
Bulmer Tye, Park Lane	<b>09:07</b>	<b>11:07</b>	<b>13:07</b>	<b>15:37</b>	<b>17:37</b>	<b>19:22</b>	
Bulmer, Cross Roads	<i>09:11</i>	<i>11:11</i>	<i>13:11</i>	<i>15:41</i>	<i>17:41</i>	<i>19:26</i>	All timings in Italics need to be pre-booked
Gestingthorpe, Foundry Corner	<i>09:17</i>	<i>11:17</i>	<i>13:17</i>	<i>15:47</i>	<i>17:47</i>	<i>19:32</i>	
Wickham St Paul, The Victory	<i>09:23</i>	<i>11:23</i>	<i>13:23</i>	<i>15:53</i>	<i>17:53</i>	<i>19:38</i>	
Pebmarsh, Bus Shelter	<i>09:32</i>	<i>11:32</i>	<i>13:32</i>	<i>16:02</i>	<i>18:02</i>	<i>19:47</i>	Timings other than those in bold type will vary up to 10 minutes either side of stated time, dependent on the number of passengers booked on the service.
Pebmarsh, War Memorial	<i>09:33</i>	<i>11:33</i>	<i>13:33</i>	<i>16:03</i>	<i>18:03</i>	<i>19:48</i>	
Little Maplestead, Corner	<i>09:39</i>	<i>11:39</i>	<i>13:39</i>	<i>16:09</i>	<i>18:09</i>	<i>19:54</i>	
Great Maplestead, Church	<i>09:45</i>	<i>11:45</i>	<i>13:45</i>	<i>16:15</i>	<i>18:15</i>	<i>20:00</i>	
Little Maplestead, Pump	<i>09:51</i>	<i>11:51</i>	<i>13:51</i>	<i>16:21</i>	<i>18:21</i>	<i>20:06</i>	
Halstead, High Street	<i>09:56</i>	<i>11:56</i>	<i>13:56</i>	<i>16:26</i>	<i>18:26</i>	<i>20:11</i>	latest arrival time
Halstead, High Street	<i>09:37</i>	<i>11:37</i>	<i>13:37</i>	<i>16:07</i>	<i>18:07</i>	<i>19:43</i>	earliest arrival time

### F315 From 01/03/2018

Halstead, High Street	<b>07:30</b>	<b>10:00</b>	<b>12:00</b>	<b>14:00</b>	<b>16:30</b>	<b>18:30</b>	
Little Maplestead, Pump	<b>07:35</b>	<b>10:05</b>	<b>12:05</b>	<b>14:05</b>	<b>16:35</b>	<b>18:35</b>	Timings in BOLD are fixed timing points
Great Maplestead, Church	<i>07:41</i>	<i>10:11</i>	<i>12:11</i>	<i>14:11</i>	<i>16:41</i>	<i>18:41</i>	All timings in Italics need to be pre-booked
Little Maplestead, Cock	<i>07:49</i>	<i>10:17</i>	<i>12:17</i>	<i>14:17</i>	<i>16:47</i>	<i>18:47</i>	
Pebmarsh, War Memorial	<i>07:54</i>	<i>10:23</i>	<i>12:23</i>	<i>14:23</i>	<i>16:53</i>	<i>18:53</i>	
Pebmarsh, Bus Shelter	<i>07:55</i>	<i>10:24</i>	<i>12:24</i>	<i>14:24</i>	<i>16:54</i>	<i>18:54</i>	
Wickham St Paul, The Victory	<i>08:04</i>	<i>10:33</i>	<i>12:33</i>	<i>14:33</i>	<i>17:03</i>	<i>19:03</i>	Timings other than those in bold type will vary up to 10 minutes either side of stated time, dependent on the number of passengers booked on the service.
Gestingthorpe, Foundry Corner	<i>08:10</i>	<i>10:39</i>	<i>12:39</i>	<i>14:39</i>	<i>17:09</i>	<i>19:09</i>	
Bulmer, Cross Roads	<i>08:15</i>	<i>10:45</i>	<i>12:45</i>	<i>14:45</i>	<i>17:15</i>	<i>19:15</i>	
Bulmer Tye, Park Lane	<i>08:19</i>	<i>10:49</i>	<i>12:49</i>	<i>14:49</i>	<i>17:19</i>	<i>19:19</i>	
Ballingdon, Kings Head	<i>08:23</i>	<i>10:53</i>	<i>12:53</i>	<i>14:53</i>	<i>17:23</i>	<i>19:23</i>	
Sudbury, Bus Station	<i>08:07</i>	<i>10:37</i>	<i>12:37</i>	<i>14:37</i>	<i>17:07</i>	<i>19:07</i>	earliest arrival time
Sudbury, Bus Station	<i>08:30</i>	<i>10:56</i>	<i>12:56</i>	<i>14:56</i>	<i>17:28</i>	<i>19:28</i>	latest arrival time



## Stories from Pets Corner

---



This is Bobby, our four-year old Shar Pei. We inherited him when he was about 15 months old from our son Jack, who had had him as a pup but went to work abroad and asked us to 'look after him' while he was away. Bobby has been with us ever since!

Shar Peis are bred as watchdogs in China and Bobby is always on the alert to let us know if there is someone approaching the house or at the front door. His temperament is typical of the breed, he is suspicious of new experiences and people, but devoted, loving and affectionate at home and spends most evenings curled up on the sofa with Beverley. He is a real character and makes us laugh a lot, we love him to bits.

Shar Peis also have particular health issues due to the 'squashed' nature of their faces. Whilst still young, Bobby had operations to raise his eyelids and eyebrows, necessary to avoid blindness caused by the eye lashes grazing his pupils. Narrow ear canals have also made him susceptible to ear infections and blockages which could only properly be cleaned under sedation.

He loves going for walks, and the usual routine is that as soon as we produce his dog harness he races around the house and expects us to chase him to attach it. Despite professional training, but also characteristic of the breed, he may bark or pull on the lead as a reaction to other dogs. Whilst this may look like aggression, it isn't, but is a mix of fear and excitement. A challenge for his owners, and apologies to those who witness this unruly behaviour.

He relies heavily on his sense of smell and when out on his walk much of his time is spent with his nose to the ground, a bit like a truffle pig. Whenever we bring shopping home he immediately sticks his head in the shopping bag to sniff what we have bought.

Overall, Bobby is a bit of an enigma but a wonderful companion.

**Beverley and Barry Vincent – Great Maplestead**

## Local Companies supporting us

---

**Courtyard Stores** in Pebmarsh are open and offering a delivery and collection service. For information look at [www.facebook.com/courtyardstores](http://www.facebook.com/courtyardstores) or ring 01787 389222. They can be found at The Courtyard, Pebmarsh CO9 2NU.

**The Mobile Lunch Company** is delivering freshly prepared meals. Visit [www.facebook.com/mobilelunchcompany](http://www.facebook.com/mobilelunchcompany) or phone 01787 476264

**The Forager's Retreat** is definitely open. They are open Thursday 10am - 6.30pm, Friday 10am - 9pm, Saturday 10am - 9pm and Sunday 10am - 4pm. See their website [www.theforagersretreat.co.uk](http://www.theforagersretreat.co.uk) or ring 01787 389123 for the latest information.

For information on the **The Pheasant** in Gestingthorpe phone 01787 465010.

For information on the **The Kings Head** in Pebmarsh see [www.facebook.com/kingsheadpebmarsh](http://www.facebook.com/kingsheadpebmarsh) or phone 01787 267942.



**TJS**  
Tree Services  
Fully insured, qualified Tree Surgeons

All remedial tree work  
(Everything from crown reduction to section felling)  
Tree Felling; Hedge Trimming; Grass Cutting; Garden Clearance  
Fully Qualified and Insured Tree Surgeons  
\*No job too big or too small\* Call for free quotation\*  
Telephone: 01376 567646 Mobile: 0775 4621888  
Laurels, Shaiford Road, Panfield, Braintree, Essex  
Partners: Thomas & Jonathan Self

## Gardening Corner

---

Here we are already slipping into autumn, where did the summer go!!

My recommended plant this month is *Geranium macrorrhizum*, a hardy plant, ideal for a dry or a shady location in the garden. It will form a blanket cover on the ground but I would not describe it as a 'thug' as it can be easily dug out if necessary.

Remember if you are collecting seeds from annuals etc. do keep them in a paper envelope. Dry storage is essential and, if your memory is anything like mine, write on the envelope; a label can save a lot of time when it comes to deciding and selecting what to sow next season.

Keep dead-heading Dahlias and annuals in tubs, baskets and containers. Feeding is essential, as compost can run out of nutrients at this time of year; a liquid brand of plant food is ideal.

In the greenhouse, start taking the lower leaves off tomato plants. The lower leaves are often a little discoloured and not really needed by the plant – it also helps improve air circulation. Be aware of blight: with the warm, wet weather this year, potatoes have suffered and the disease can spread to tomatoes in the vegetable garden and greenhouse. Remove any affected leaves at the first sign of marked yellowing with black areas.

For those of you planning a border in the garden with a spring display of bulbs, now is the time to have a look around garden centres while their bulbs are new stock and at their best. Store them in a dry location until ready to plant and, as I have said before, tulips do not need to be planted until early November.

Any bare patches on the lawn can be re-seeded, as we should soon be into cooler days. Since most birds love grass seed, it's best to try and cover the area you have worked on. A small area can be fleeced or, if you are sowing a larger section of ground, use fine netting. Water the seeded area regularly if we have a dry autumn.

Enjoy your garden.....The Arborist





# **Gestingthorpe**

---

## **Support in Gestingthorpe**

---

Please if you are self isolating, or scared, or lonely or need any help please contact Carrie on 07872 170277 or Helen on 07793 402297 if you live in the Church Street, Sudbury Road and Nether Hill area and Nic 07908445239, Penny 07840 367172 or Kate 07771 535523 for the Audley End, Moat Street and outlying areas. The village is there to help you.

### **Gestingthorpe 'Gathering' Mornings 10am to 12 noon**

---

The relaxation in COVID-19 rules meant that we could restart our coffee mornings; we delightedly took that opportunity!

We decided that for our first coffee morning, held on Friday 30th July, we would have a couple of tables on the front lawn. That was the plan so we laid out the tables and chairs some in the village hall and a couple on the front lawn all tables being brightened up with some seasonal flowers in vases. Unfortunately the weather decided to put a dampener on the idea of outside seating. Who'd have thought it; rain in August! Undeterred we got ready for our guests having beforehand sanitised all tables and chairs, counters, etc. etc. Our 'coffee morning team' provided delicious home-made cakes and steaming cups of coffee and tea. The number of villagers who came along was lower than the number who came to the last coffee morning in early 2020 but the enthusiasm, friendliness and chatter was still as good.

It was good to be back.

Friday 13th, another batch of more delicious cakes and pretty flowers. A few more of 'our regulars' and a couple of new faces. A lovely morning spent with friends over a hot drink and a slice of cake.

Our coffee mornings are held between 10 am and 12 noon on alternate Fridays in the village hall are continuing to be a hit with those of all ages.

Friends and neighbours in the village come along to enjoy chatting over a mug of tea or coffee and some delicious home baked cakes.

If you haven't already been to one of our coffee mornings please come along soon; we would love to see you.

The next few coffee mornings will be held on the Fridays of 27th August, 10th September and 24th September. We hope to see you there.

### **Gestingthorpe First Tuesday Book Club**

---

The first meeting of the Gestingthorpe book club is Tuesday 7 September 2021 at 7.30pm in the Village Hall. Please join us for books, chat and wine.

Contact Penny for further information [pbagby1@gmail.com](mailto:pbagby1@gmail.com) or 07840 367172

## More Gestingthorpe

### Gestingthorpe Cricket Club.

These are the final fixtures for this season:

SUN 01	AUGUST	WEST BERGHOLT	HOME	1.30pm
SUN 08	AUGUST	TILLINGHAM	AWAY	1.30pm
SUN 15	AUGUST	WEST BERGHOLT	AWAY	1.30pm
SUN 22	AUGUST	CHAPPEL & WAKES COLNE	HOME	1.30pm
SUN 29	AUGUST	DEDHAM	HOME	1.30pm
SUN 05	SEPT	BURES	AWAY	1.30pm
SUN 12	SEPT	EDWARDSTONE	HOME	1.00pm
SUN 19	SEPT	SUDBURY	HOME	1.00pm

### Gestingthorpe Village Hall. Annual General Meeting 2021

On the assumption that the COVID-19 restrictions will continue to allow for a public meeting indoors the AGM will be held on Thursday 2nd September at 7.30pm in Gestingthorpe village hall. This AGM will be the one to replace the one in July that had to be postponed.

The Committee need you to observe the COVID-19 rules applying on the day.

All villagers from the Parish of Gestingthorpe are invited to come along to the AGM and to hear what we have done since the AGM in the village hall in 2019 (a COVID-19 compliant AGM was held in 2020) and what we are planning to do in the future for your village hall.

Please come along to have your say in the running of your village hall.

We also need you to cast your vote on who is to be on the Village Hall Committee for the following 10 months.

If you would like to stand for, or nominate someone, for a position on the Village Hall Committee please contact either Steph Prior 01787 462351 or Chris Harman 01787 462763. All those voted onto the committee are asked to attend the committee meeting that will follow on from the AGM.

## More Gestingthorpe

---



**St. Mary's, Gestingthorpe**

**invites you to our special**

**ALL AGE FAMILY**

**services on:**



Sunday 5th September at 10am

&

Sunday 26th September at 10am

**Come and join Carrie & Nic leading an informal Service suitable for all ages.**

A Compline Service is also offered to all on the  
26th September at 4pm



Knights Hospitallers Parishes

Do you live in the ancient parish of Gestingthorpe?

**You could get a grant**

Grants are awarded for a wide range of educational activities such as -  
School trips, school uniform, books & stationery, cycle equipment,  
musical instruments & tuition, sports equipment & coaching and  
driving lessons.

**Costs relating to home schooling will be considered.**

Find out how to apply from the Secretary, Jane Crumpton-Taylor, Pot  
Kilns, Pot Kiln Chase, Gestingthorpe, CO9 3BH

[jane@crumpton-taylor.com](mailto:jane@crumpton-taylor.com) 01787 460277 or 07491 690510

Grant applications with supporting copy receipts must be received in  
writing (or by email) by **Friday 8<sup>th</sup> October 2021** and will be considered  
at the next Trustee meeting on Wednesday 13<sup>th</sup> October 2021

## THE READING ROOM

This month our reading recommendations have been suggested by Great Maplestead resident **Keith Brownlie**.

Both his selections cover Second World War military themes:

**Rommel as Military Commander** - a Pen and Sword Military Classic by **Ronald Lewin**.

I chose this book because my father served with the 51<sup>st</sup> Highland Division in North Africa, Sicily and Italy during World War 2. He returned for D Day and ended the war in Hamburg. Dad served in the desert as a Royal Engineer and showed me some of his pictures; he had kept 2 examples of the deadly Shue mines that he'd had to defuse during the battle of El Alamein.

My father was always complimentary about the enemy in the desert war and held Erwin Rommel in very high esteem. The Desert Fox, as he was called, was a genius. His personal leadership and ability to improvise on the battlefield with minimal resources was exemplary.

He was much admired for his integrity. This characteristic, admired even by his adversaries, proved fatal. Unafraid to voice his objections to Hitler's military decisions, Rommel was associated with the 1944 plot to kill the dictator. In the wake of the plot's failure, Rommel was forced to take his own life.

Ronald Lewin paints a warts-and-all picture of the Field Marshal in this book, comparing Rommel to Montgomery. It is a great read and it transported me back to my father's experiences. Dad was very much an inspiration to me - I followed in his footsteps into the Corps of Royal Engineers. Dad's Africa Star is a very precious family reminder of his service.

**Arnhem by Antony Beevor**

Of all the battles of World War 2, the Battle for the Bridges in 1944 was significant. Operation Market Garden was an ambitious plan to end the war early by capturing the bridges leading to the lower Rhine and into Germany, isolating German forces and cutting off their supply lines. The book details the thinking behind this bold initiative and describes how and why it failed.

It was Field Marshall Montgomery who came up with the idea, overriding many objections, but the cost of its failure was horrendous, mostly for the Dutch who risked everything to help the Allied Forces. German reprisals on the Dutch people were cruel and lasted until the end of the war.

This book, written in Beevor's inimitable and gripping narrative style, is much more than about a single dramatic battle though - it looks into the very heart of the war.

## Nature Notes

---

It seems like the whole summer has passed since my last report.

Like so many in the UK after Covid restrictions were lifted, we set off on a staycation. Our destination was Orkney and we were not disappointed. It is a paradise for birdwatchers, with 12 RSPB Reserves, 6 of these on the main island. It was like being abroad, seeing birds totally foreign to Essex such as black guillemot, great skua, twite and grasshopper warbler. Then there was the truly unexpected: a lone rose-coloured starling on North Ronaldsay – a bird normally occurring on the steppes of Central Asia but a rare vagrant in Britain. Orkney also possesses many amazing historical sites, the pick of which is Skara Brae, an intact 5,000 year-old Neolithic village, pre-dating Stonehenge and the pyramids.

Back in Essex in early July it was immediately obvious that summer was in full swing; the verges were high and butterflies abounded. There were frogs and, surprisingly, lots of yellow shell moths flying in daytime. Resuming my local walks, it was nice to be back seeing little owls, bullfinches and nuthatches. Blackcaps and chiffchaffs were still singing sporadically but whitethroats had gone quiet. Yellowhammers, slow to start, were singing constantly.

I have added two properties in Pebmarsh to my local patch and look forward to monitoring the wildlife there over the coming months. One of these has turtle doves, which is a fantastic record for our area. These birds are greatly reduced in number, down 93% since the 1970s. The only site I knew for them was the Essex Wildlife Trust's Wrabness Reserve on the Stour Estuary and I usually visit once a year just to see them there.

In nature the seasons seem to be ahead of what we humans think. On the first day of August there were groups of house martins high up, wheeling and generally drifting south on the start of their autumn migration. They have a short flat pit call that, once identified, is easy to pick up and there has been several groups since then, all heading in the same direction. I assume these are birds that have bred much farther north, as I saw many nests with young still being fed in Wivenhoe recently.

Another bird that, for me, signals a change in the season is the tawny owl. I heard my first local bird hooting on the 3rd of August and they become noisier as we head into autumn proper. Not long till the fieldfares and redwings will be descending.

**Patch Patroller**

## Advertisements

---

If any of our advertisers are interested, they can have a colour advert on either the front or the back of the back page. This will cost £35.00 per issue plus a generous donation to our churches. Have a look at February's to see the effect. If any one is interested contact Jenny the editor!



## **Pebmarsh**

---

### **Support in Pebmarsh**

---

Pebmarsh Volunteers continue to be here for you during the pandemic. If you need anything, such as if you're isolating/quarantining and need help to collect prescriptions or with shopping, get in touch with Kate Carling (Phone: 267 924) and she will put you in touch with the village Volunteer for your area of the village.

### **Thank you Jan Bond and welcome Luke Brown and Sarah Burgess**

---

All at The Friends of Pebmarsh Church (FOPC), the Pebmarsh Village Hall Management Committee and the Nott Family Trust thank Jan Bond who will be stepping down from her volunteering role at the Parish News Magazin for all the amazing community work and support that Jan has given, it is much appreciated.

Through Jan we have been able to keep all updated with our volunteering who has helped us to ensure that the news gets out.

We also look forward to working with Luke Brown and welcome him as he steps up to carry on the community work. The committee would also like to thank Sarah Burgess for stepping up and taking over the organising of the distribution of the parish magazine, thank you Sarah.

### **Dear reader**

---

I have taken over the role of collating the submissions for the Parish Magazine for Pebmarsh. If you have any articles or news stories about your organisation then please do contact me on 07919 375 341 or by email on [LhwBrown@hotmail.co.uk](mailto:LhwBrown@hotmail.co.uk). I may, from time to time, ask someone in Pebmarsh to write a short article about a Pebmarsh event for publication. This month Daisy Thomas has very kindly agreed to write about the highly successful Pebmarsh summer fete in August.

Can I take this opportunity to say a big thank you to Jan Bond who has been responsible for this role for at least the last four years. Her work has been very much appreciated.

Luke Brown, The Old Post Office.

### **Pebmarsh Village Hall Management Committee**

---

#### **COVID – 19 PRECAUTIONS – UPDATE AS AT JULY 2021**

Dear reader.

While the government have reduced covid restrictions from the 19 July 2021 it is still worth taking care as Covid-19 has not gone so please remain cautious. This will help to protect yourself, others and Pebmarsh Village Hall from the virus. The easing of the restrictions by the UK Government means from now at Pebmarsh Village Hall:

## More Pebmarsh

---

### More Pebmarsh Village Hall Management committee

---

- You will not need to stay two metres apart from people.
- There will be no limits on the number of people you can meet.
- Face coverings will no longer be required by law, but it is recommended that face coverings are worn in crowded areas by those that can.
- There will no longer be limits on the number of people who can attend weddings, civil partnerships, funerals and other life events.
- Regular hand by all washing is encouraged.
- Regular cleaning and disinfecting of surfaces by all is encouraged.
- The use of the sanitizing stations and cleaning supplies by all is encouraged.
- Adequate ventilation of the facilities for all activities is encouraged.
- The immediate reporting to PVHMC in writing of any suspected / confirmed Covid – 19 infections affecting the facilities, is an ongoing condition of use of the facilities.

By observing the above, all can help PVHMC to take best steps to prevent any incidents of Covid – 19 at Pebmarsh Village Hall and your committee thank you in advance for you past and continued assistance, it is much appreciated.

John, Alistair, Kathy, Tricia and Perry

Pebmarsh Village Hall Management Committee

### Sunny success at Pebmarsh Village Fete

---

Blessed with great weather on August 14th, the 2021 Pebmarsh Village Fete was a roaring success. After a year of isolation and (not so social) distance, the community finally got to celebrate together in the sun. The crowd was buzzing all afternoon, with a turnout beyond anyone's expectations: old faces, new villagers and even non-village members turned up to join in the festivities.

Over ten different local artists and businesses displayed their crafts, from environmentally friendly soaps to handmade towel-based plant pots, there was something for everyone. The café and barbeque kept us all fed and the live-music kept us entertained. Alongside this, the volunteer-run games varied from 'splat the rat' and 'bowl the pig' to 'pegs on the washing line'. Whether you were the adult taking each game far too seriously or the child coming back for their fifth time, we all had an incredible day.

**Silas Penfold**

**Mole Catcher**

Traditional Trapper - Reliable Local  
Service

**01787 269884**

Mobile 07927 893853



## **Gardening Angel**

Experienced female gardener  
available for regular, or one off,  
gardening tasks ranging from  
garden re-designs and planting  
plans, to weeding, pruning, grass  
cutting/edging, hedge trimming,  
mulching, tubs etc

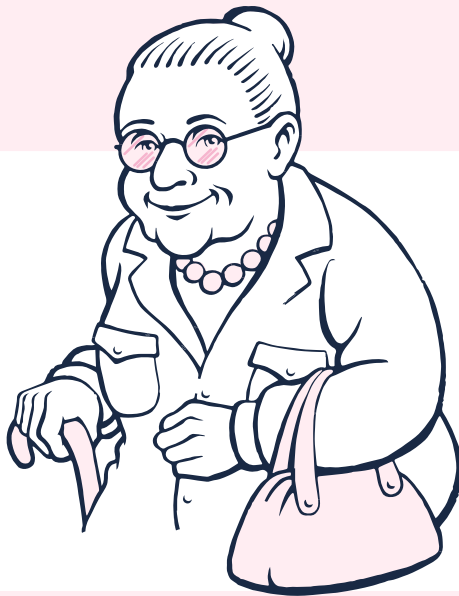
Telephone Jo on

**07804 474494 (Pebmarsh)**

**Bob Chaplin**  
**Qualified**  
**Electrical and Fire**  
**Technician**  
**Electrical work**  
**Security Lighting**  
**Domestic**  
**and**  
**Commercial Fire**  
**Detection**  
**07795 170644**  
**01787 469600**

Let the oil lady look after  
your heating oil needs

THE



OIL LADY

Kerosene / Gas Oil / Diesel for domestic and commercial premises  
Fuel when you need it with daily orders and deliveries  
Our lowest price given everytime, no hassle or need to haggle  
Registration is free, by phone, email or through our website  
We are here to help, from your order through to delivery and beyond  
t. 0800 228 9140 e. [info@theoillady.co.uk](mailto:info@theoillady.co.uk)  
[www.theoillady.co.uk](http://www.theoillady.co.uk)



M. L. HUGHES **ROOFING and building**

- ALL ROOFING/BUILDING WORKS UNDERTAKEN
- ALL WORK FULLY GUARANTEED
- FREE ESTIMATES AND WRITTEN QUOTES
- FAMILY BUSINESS FOR OVER 30 YEARS
- 

**\*FOR A FRIENDLY RELIABLE SERVICE CALL TODAY\***

Email [m.hughes605@icloud.com](mailto:m.hughes605@icloud.com)

Mobile 07850 192891

Office/home 01787 462376

## R M D Upholstery

All upholstery work undertaken

Modern and antique

Loose covers

Curtains

Free estimates

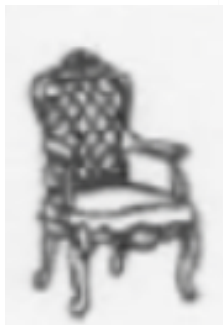
For a reliable and friendly service  
please contact

rickdarvell@icloud.com

01787 312265

07806 505916

(Sudbury, Suffolk)



## Paul the Sweep

paul.wheatley@live.co.uk

### Professional Chimney Sweep

Wood Burners, Open Fires,  
Stoves, Boilers, Inglenook,  
Multi Fuel

Fully insured, certificates  
issued



01787 258021

07775 334272

# Only Oil

## OIL BOILER SERVICING & REPAIRS

☎ 01787 313250

or 01473 827792



## More Pebmarsh

---

### More Pebmarsh Village Fete

---

The day was punctuated by a number of races: egg-and-spoon, hula hooping, plank-walking and the three-legged race with various parent/child combinations with comical height differences. It was wonderful to see young children full of excitement, as well as multiple adults ending up on the floor! Even I managed to get involved in the three-legged race (maybe too competitively for a 20 year old...).

The fete committee's endless hours of planning and preparation made the day run seamlessly, as well as everyone who volunteered and contributed on the day. Special thanks must be given to Sharon Donaldson's tireless efforts, as well as Jonathon Nott's generosity opening his wonderful garden. All the funds raised will be going towards future community events, which means successful fetes for many years to come! Daisy Thomas

### The Pebmarsh Bowls and Social Club

---

The Bowls Club is hoping to start up again in the autumn. We meet on the first Wednesday of the month in the evening from 7 pm-9 pm. The cost is £3.00 a session and it is very informal. We need new members to continue running the club so please contact Eileen or Jim Crayston, Cricks Farm, Pebmarsh 01787 222241 email [jim@craystonfarms.co.uk](mailto:jim@craystonfarms.co.uk)

### A wet year in the Maplesteads

From 2002 until 2017 I lived on a 'lifestyle' block just north of the Auckland Harbour Bridge in New Zealand. A lifestyle block is a small hobby farm and ours was 10 acres of mixed native bush and pasture where we ran a few sheep. For most of this time I kept records of the rainfall we received and was surprised at the constancy of total annual amounts. Every year this was 1500mm plus or minus just 100mm. We arrived in Great Maplestead in 2017 but it wasn't until last year that I installed a gauge and started collecting data.

I read that Essex is the driest county in England with annual rainfall of just 500mm near the coast, rising to nearer 600mm further inland. A neighbour had even suggested that we get less rainfall than Israel, which really surprised me. Certainly, our first few years were dry and one year (was it 2018?) our lawn was brown and never cut for several months. From the beginning of July 2020 we recorded 669mm over the following 12 months, which is 11.5% higher than the average for inland Essex. It certainly felt like the wettest year we had experienced; our garden is a riot this year. Still, it's a lot less than the 1500mm we were used to in NZ!

Alan Emmerson Great Maplestead

## Curried Parsnip\* Soup – for 12

\*or you could use a mixture of vegetables – leeks, carrots, celery and parsnips.

### Ingredients:

4oz (100g) butter  
2 tablespoons sunflower oil  
2 large onions – chopped  
2lb (900g) parsnips – peeled and cubed  
OR 2lb (900g) mixed vegetables, including parsnips  
2 heaped teaspoons of medium curry powder  
4 pints (2.25l) beef stock – I use Knorr beef stock cubes  
Salt & ground black pepper

### Method:

Heat the butter and oil in a large

saucepan. Fry the onions for 5 mins until soft. Add the parsnips and continue to cook for a further 10 mins.

Stir in the curry powder, cook for a minute, add the stock then bring to the boil. Cover with a lid and simmer for about 40 mins until the vegetables are tender.

Reduce the soup to a puree in batches, using a processor or blender. Return the soup to the pan, taste and check seasoning. Reheat until piping hot, ladle into bowls – and swirl single cream on top, if you wish!

Tip: This soup freezes really well, so it will keep for a number of smaller meals.

Liz Newton – Great Maplestead

rightmove

Zoopla

# DAMIAN PRIOR

POWERED BY exp UK

Professional Photography, Floorplans and Presenter led walkthrough videos

Experienced country estate agent offering an exceptional service to all villages surrounding Halstead and Sudbury. Call now for a free valuation of your property. Tel: 01787 275256 Email: damian.prior@exp.uk.com [www.damianprior.co.uk](http://www.damianprior.co.uk)

## **Little Maplestead**

---

We can collect drugs, search the internet if you do not have a computer, or just be a friendly voice on the other end of the phone. If you or others you know feel may need support please contact one of us.

Please contact Bill Piper on 01787473933, Jane Stone on 01787472525, Gemma Frost on 07826523187

### **Harvest Celebration at Little Maplestead 2021**

---

We could never have predicted that in 2019, as we packed away the empty dishes, that our next Harvest celebration would be a full two years later.

It is with great pleasure that I can confirm that the marvellous Little Maplestead Harvest meal will be taking place again this year in the glorious setting of the Round Church on Sunday 3rd October at 12 noon.

We will be serving our usual 3 course hot meal for the amazing value of £10 per head. It is essential to book your places as they are snapped up fast.

We will need lots of help with the cooking, setting up and serving on the day, so please get in touch with Jane 01787 473933 if you can offer to help in any way. It is great fun to do!

### **Craft Fair at The Round Church**

---

Following a very successful plant sale in May we are holding the second part of our annual event on Saturday September 18th with our Craft Fair. This is a fantastic opportunity to come along and see a whole variety of crafts in the widest sense of the word. Every stall is a local business so it is great to support them as well as raising funds for our little church. The regular favourites like Tiger Lily bags, Zebra Jewellery and the Jam Shed will be there as well as The Big Bear Cider Mill and wonderful Craft gins. In addition we have a local artist bringing paintings and you can even get a mini manicure from one of our newest businesses in Great Maplestead.

Our legendary tea and cake stall will also be returning due to popular demand. So pop along on the day to enjoy a browse and a cup of tea with a slice of cake with friends. Soup and bread will be served from noon until it runs out! If anyone would like to help out on the tea stall or make a cake for us please do get in touch with Jane on 472525. We would love to have some new helpers join us for an hour or two. See our poster in the magazine for further details. We look forward to seeing you all there!



# Craft Fair



Saturday 18 September 11am - 3.00pm  
at the round church

Little Maplestead CO9 2SL

Handbags and scarves  
Jewellery  
Big bear cider

vintage clothes  
Greetings cards  
Craft gin

Local artist and pottery  
Local honey and jam  
Hand made crafts

Soup for 12.00pm on the legendary cake stall

Proceeds to the Round Church

Entry £1.00 to include a cup of tea or coffee



## You are cordially invited to come to our Harvest Lunch



a 3 course home-cooked lunch  
at the Round Church Little Maplestead

Sunday October 3 at 12.00pm

Adults £20.00 Children £5.00

Please contact Jane Piper on 01787 473933 to book your place or for further details



Please bring your own beverage and glass

## Great Maplestead

### Great Maplestead Volunteer Network

Just to let you know that the Great Maplestead Coronavirus Volunteer Support Network is still up and running.

If you would like any help please do not hesitate to contact me by phone on 01787 461002 or 07773 627897, or by e-mail at jacqui.mee62@gmail.com

### The Maplesteads WI

The August meeting was the first time we had met in the village hall and we started with a fish and chip supper before the AGM. Carol Brownlie was re-elected to remain as President until May 2022. A discussion took place about the arrangements for the Village Fun day. We then spoke about the Centenary Planter dedication that will be held on 2nd September 2021 at 7.30pm followed by a talk on The Chanson Singers, Charles Aznavour and Edith Piaf by Paula Short. This is an open meeting and everyone is welcome. There will be refreshments and a raffle.



Photos of the WI refreshment tent at the Village Fun day.

## Maplestead Carpet Bowls

is re-starting at

**2.00pm on Monday 13<sup>th</sup> September**

in **Great Maplestead Village Hall**

Just **£2.00 for 2 hours** of fun



*All are welcome – come along and join us!*



## More Great Maplestead

---

### The Maplesteads' Autumn Show.

---

#### Great Maplestead Village Hall

Saturday 11<sup>th</sup> September

We hope that you received your schedule for the forthcoming **Autumn Show** in your previous copy of the Parish Magazine and that you have started your preparations to make this year's Show bigger and better than before.

If you did not receive or have misplaced your schedule, additional copies were put in both Great and Little Maplestead Churches or you can obtain a copy from the Chairman, Carol Brownlie. The schedule is also available to download from the websites of each village.

The Village Hall will be open for entries **Friday evening 6.30 – 7.30 pm** and **Saturday 11.30 – 2.30pm**. The Hall will be **closed from 2.30 – 5.30 pm for judging** and will **reopen at 5.30pm for viewing and refreshments** followed by the prize giving, produce auction and raffle.

This year we have two new trophies for the photographic competition as well as the new tallest sunflower competition. For details of the sunflower competition contact [jo@stgreenbuilders.co.uk](mailto:jo@stgreenbuilders.co.uk) or Carol Brownlie.

If you still have a trophy from the 2019 Autumn Show can you please return it to Carol Brownlie, Godsolve, Church St., Great Maplestead. Tel: 01787 461 527 or e-mail [carolbrownlie@gmail.com](mailto:carolbrownlie@gmail.com)

We hope that you and your family will stay for the evening and enjoy the auction of donated produce and the raffle and take home some prizes and bargains! The bar will be open, serving beer, wine and soft drinks.

The Committee are looking forward to seeing you on **Saturday 11<sup>th</sup> September** for what we hope will be a bumper show!!!

#### Coffee again at St Giles

---

As Churchwardens it gives us great pleasure to be able to announce that our Wednesday Coffee Mornings are about to re-start in the Tower Room at St. Giles.

Wednesday, September 1st is the date of our grand re-opening and we hope to see all our old customers on that day – and perhaps some new ones too!

We'll be serving from 10.30am until noon – outdoors if it's warm enough, in the church if not. Please come along and join us if you can.

AND From September we will also be serving coffee twice a month after the St. Giles services on the 2nd and 4th Sundays.

## More Great Maplestead

### More Coffee again at St Giles

Like the Wednesday Coffee Mornings, this is something that we have all missed and we are looking forward to the beginning of 'getting back to normal'.  
Jill Newton & Gill Peskett - Churchwardens

## *The Maplesteads'* **JUMBLE SALE**

*is back in Great Maplestead Village Hall!*  
**Saturday 25<sup>th</sup> September at 3.00pm**

**Admission 30p Raffle & Refreshments**

All types of clothing, fabrics and small pieces of furniture (e.g. tables/chairs) welcome  
[but **no** beds, wardrobes or settees please]

Further information from: Diane Smith (473 300), Doreen Faulks (460 727) or Liz Newton (461 308)

**Deliver contributions to the Village Hall only on:**

**Friday 24<sup>th</sup> September : 9.00am-4.00pm**  
or **Saturday 25<sup>th</sup> September : 9.00am-noon**



*All proceeds in aid of the Village Hall*

<https://greatmaplesteadpc.co.uk/parish-information/events/>

## Maplestead Knitting Group



is re-starting on the last Wednesday of each month commencing on

**Wednesday 29<sup>th</sup> September from 2.00pm until 4.00pm**

At Godsalve, Church Street, Great Maplestead.

*All are welcome – wool and needles can be provided.*

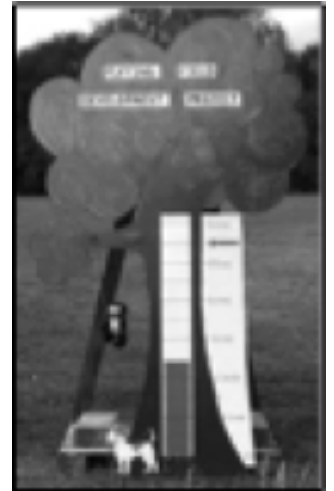
*Further details contact : Carol Brownlie – 01787 461 527*

# Great Maplestead's Playing Field Fun(d) Day!

Saturday 14th August saw Great Maplestead host an afternoon of fun and fundraising on the Playing Field to mark the official launch of the Parish Council's ambitious £55,000 Development Project.

Beautiful weather and the first opportunity to attend an outdoor social event in well over a year attracted hundreds of people to enjoy a super summer fête featuring dancing, displays, a lot of competitive activities and a fun dog show.

The afternoon raised over £1,400 – an amazing result! Unveiled at the fête, and now permanently in place on the Playing Field, the Totaliser Tree shows that funds raised to date have reached nearly £24,000 – nearly half-way towards the Council's overall target – but as much again and more is still urgently required\*.



The Fun(d) Day was introduced by a striking display of Morris dancing from Hells Belles, as colourful and musical as ever, the ladies and gents strutting their peacock feathers and welcoming visitors to the show.

Various fun events and competitive activities were dotted around the field, attracting lots of interest. Children particularly enjoyed playing the old-school games, winning a Gold Star and rushing to pick a Lucky Dip gift from the winners' prize basket.

Some games, such as the Coconut Shy, Tin-Can Alley, the Golden Goal, Golf Driving, Splat the Rat and Bowling for a Pig, required real skill – others, such as the mystery Guess Who? (Gary Barlow – which nobody got!) and Estimate the Number of Sweets in a Jar (117) needed a bit of luck to win. The Turners' quirky Human Fruit Machine provided much entertainment, with the bonus of a cash prize at the end of the day.

By far the biggest attraction of the afternoon though was the Fun Dog Show, compered by the inimitable Keith Brownlie – never before have so many waggy tails been seen parading round the Playing Field! Nine different classes drew a huge entry of over 75 dogs, some from Colchester, Sudbury, Hadleigh and even further afield.



## More Great Maplestead

### More Playing Field Fun(d) Day

Support for the dog show came from Platinum Pet Foods, Burns Natural Foods, and Fish 4 Dogs, while individual classes were generously sponsored by local businesses, vets, kennels, pet food stores and personal donors.



The top three dogs in each class, judged by Jessica Reynolds from Mulberry Vets at Henny, won rosettes and a selection of goodies – even dogs that were not prize-winners received a 'well done' rosette and goodie bag. The top dog in each class competed for Best in Show, which was won by Boris, a handsome cockapoo handled by Darcey Jeggo, who had previously won Best Young Handler.

A great deal of interest was also shown in the Dog Agility display, while Pets as Therapy and Guide Dogs for the Blind representatives were also present, welcoming one of their first chances in a while to attend such an event and talk about the work of their worthwhile charities.

The Face Painting booth was busy all afternoon and lots of Wildflower Seeds were sold to scatter on the newly-created security bund round the car park. The Council's display illustrating its playing field plans – and the recently installed picnic benches and Boules Court – also prompted much interest and discussion.

The WI run refreshment area, offering teas, coffees and cakes, and the Beer Festival team's tent provided places to sit, drink and relax and both did a roaring trade all afternoon, aided no doubt by the warm sunshine – the Jam Shed and Aaron Whippy's ice-cream van also did good business.

All in all, the fête conclusively showed why the Playing Field – which provides a safe, open space for residents, their children and grand-children to gather, relax and socialise with friends and neighbours – is such an important asset for the village.

The Organisers and the Parish Council wish to sincerely thank the dancers, the Dog Show ladies, the Maplesteads' WI, the Beer Festival team, those running the games and all the other participants and volunteers who, both before and during the afternoon, helped make this Fun(d) Day such a resounding success.



\*Donations can be made (anonymously, if you'd prefer) either by cheque made out to 'Great Maplestead Parish Council' and sent to The Clerk, New House, St Giles' Close, Church Street, Great Maplestead CO9 2RW or by BACs (e-mail [anncrisp@greatmaplesteadpc.co.uk](mailto:anncrisp@greatmaplesteadpc.co.uk) for details)

## Hedingham Heritage Society

---

**...is back for the autumn! Events in September:**

❖ **Thursday 2<sup>nd</sup> – Essex in the News**

Pip Wright – author and local historian – looks at newspaper articles about the county between 1720 and 1900. Lots of gems from Essex local rags, from smuggling in the Essex marshes to riots in Colchester and Witham. Former Essex celebrities include an executioner, a wayward vicar's wife and a highwayman or two...

7.30pm in Castle Hedingham Memorial Hall. Entry is free.

As well as **free entry**, attendees will also have the opportunity to join and enjoy the Society's programme of meetings, events and projects from October 2021 through to December 2022.

❖ **Sunday 19<sup>th</sup> – A Walk Around The Maplesteads**

This walk, of about 4 miles, will take in Little Maplestead's Round Church and Pearman's Hill.

10.30am in Great Maplestead Village Hall car park CO92RE

Covid safeguards – social distancing, face coverings etc. – will be observed at the Society's meetings, in accordance with Government guidelines in place at the time.

Anyone interested in joining the Society can just come along to the indoor meeting or walk; alternatively, advise of your interest by e-mailing [hedinghamheritage@gmail.com](mailto:hedinghamheritage@gmail.com)

Membership fees remain at **£12 single/£18 joint**, with **under 16's free** and it is well worth joining for 15 months of talks, walks and activities focused on the local environment, its past, present and future.

---

### **Contact information for further details:**

Rob Worley Trudi Cullum Peter Bayes

[robertj.worley@btopenworld.com](mailto:robertj.worley@btopenworld.com) [trudi@newriver.co.uk](mailto:trudi@newriver.co.uk)  
[peter\\_bys@yahoo.co.uk](mailto:peter_bys@yahoo.co.uk)

Tel: 01787 460 664 Tel: 01787 462 889 Tel: 01787 469 953

---

More information about the Society's programme of meetings, events and projects and can be found at: [www.hedinghamheritage.org](http://www.hedinghamheritage.org)



## Local information

---

**Solar Society** will make every effort to restart their meetings when it is appropriate.

Programme to be announced.

In the meantime , take care everybody.

Further info from Miles Scrivens 01787-469766 or Wanda Sellar 01787 463449.

**Local Women's Running Group:** laurabloom@btinternet.com or on 07801 749802

**Local Libraries:** Halstead and Sible Hedingham Libraries, libraries.essex.gov.uk.

**Four Parishes Book Group:** Alison Cantor. 01787 462537 or acantor@linus.plus.com

**Sudbury Area Cancer Support Group:** Ruth Worsley on *ruth-SACSG@outlook.com*

**The U3A Halstead:** [u3asites.org.uk/halstead/welcome](http://u3asites.org.uk/halstead/welcome)

**The U3A Sudbury:** [u3asites.org.uk/sudbury/home](http://u3asites.org.uk/sudbury/home)

**U3A Braintree:** [u3asites.org.uk/braintree/events](http://u3asites.org.uk/braintree/events)

**Halstead & District Photographic Society:** [www.halsteadphoto.org.uk](http://www.halsteadphoto.org.uk)

**Gestingthorpe History Society:** [www.gestingthorpehg.co.uk](http://www.gestingthorpehg.co.uk)

**Community Agents;** Community-based support for an ageing population: [www.communityagentsessex.org.uk](http://www.communityagentsessex.org.uk).

**The Empire Theatre Halstead:** [www.empire-theatre.co.uk](http://www.empire-theatre.co.uk)

Halstead and District Local History Society: [www.halsteadhistory.org.uk](http://www.halsteadhistory.org.uk).

**The Hedingham Singers:** Bob Lilley on 07790 573435 or [www.thehedinghamsingers.com/](http://www.thehedinghamsingers.com/).

**Sudbury Newstalk:** [www.sudburynewstalk.co.uk](http://www.sudburynewstalk.co.uk) or 01787 468535.

### Hedingham Medical Centre

---



The Castle Hedingham surgery is triaging all patients so please phone 01787 461465. Do not go to the surgery. The surgery is open from 11.00 - 13.00 and 14.00 - 18.00 Monday to Friday to collect pre-ordered prescriptions. Their website is [www.hedmed.co.uk](http://www.hedmed.co.uk).

## Local and National Authority Representatives

---

### Essex County Council

Councillor Peter Schwier - [cldr.pschwier@essex.gov.uk](mailto:cldr.pschwier@essex.gov.uk)

### Braintree District Council

#### Great and Little Maplestead

Councillor Peter Schwier - [cldr.pschwier@braintree.gov.uk](mailto:cldr.pschwier@braintree.gov.uk)

#### Gestingthorpe

Councillor Wendy Scattergood - [cldr.wscattergood@braintree.gov.uk](mailto:cldr.wscattergood@braintree.gov.uk)

#### Pebmarsh

Councillor George Courtauld - [cldr.gcourtauld@braintree.gov.uk](mailto:cldr.gcourtauld@braintree.gov.uk)

Councillor Gabrielle Spray - [cldr.gspray@braintree.gov.uk](mailto:cldr.gspray@braintree.gov.uk)

### Westminster

James Cleverly MP - [james.cleverly.mp@parliament.uk](mailto:james.cleverly.mp@parliament.uk)

## Parish Council Websites

---

Gestingthorpe	<a href="http://www.gestingthorpepc.co.uk">www.gestingthorpepc.co.uk</a>
Great Maplestead	<a href="http://www.greatmaplesteadpc.co.uk">www.greatmaplesteadpc.co.uk</a>
Little Maplestead	<a href="http://www.littlemaplesteadpc.co.uk">www.littlemaplesteadpc.co.uk</a>
Pebmarsh	<a href="http://www.parishcouncil.pebmarsh.com">www.parishcouncil.pebmarsh.com</a>

## Village Emergency Telephone Service (VETS)

---

VETS provide support when a defibrillator is required although the first action must be a 999 call. The telephone numbers of the village VETS are:

**Little Maplestead 01787 852252**

**Gestingthorpe 01787 852850**

**Pebmarsh 01787 852300**

## Neighbourhood Watch representatives

---

Gestingthorpe	Helen Skerratt	01787 237297
Great Maplestead	Ian Johnson	01787 461109
Little Maplestead	Bill Piper	01787 473933

## The Churchwardens serving our Benefice are

---

Great Maplestead	Gill Peskett	01787 462786	<a href="mailto:gillpeskett43@gmail.com">gillpeskett43@gmail.com</a>
	Jill Newton	01787 463893	<a href="mailto:gilliannewton4@gmail.com">gilliannewton4@gmail.com</a>
Little Maplestead			
Gestingthorpe	Alice Nolda	01787 469688	-
	Peter Nice	01787 460126	<a href="mailto:peter.427nice@btinternet.com">peter.427nice@btinternet.com</a>
Pebmarsh	Sarah Burgess	01787 269092	<a href="mailto:sarahburgess@btinternet.com">sarahburgess@btinternet.com</a>



We urgently need fruit juice (1L variant please), custard, laundry detergent, baby wipes, size 6 nappies and washing up liquid.

We currently have large stocks of baked beans, cereals, pasta, pasta sauce, biscuits, fish, soup, baby food and cereals, and we would ask if you could donate one of the items from the list below.

Tea (40 bags if possible)	Coffee (small jars)
Cereal bars	Instant mash
Pasta sauce	Breakfast cereal
Tinned fruit	Packet soup (cuppa soups)
Tinned tomatoes	Tinned rice pudding
Tinned spaghetti	Rice
Tinned sponge puddings	Warmed tinned meat
Sugar 500gms	Jam

Larger packs of items don't fit in our parcels making it difficult for our clients to carry home, this is why we ask for small packets.

[braintreearea.foodbank.org](http://braintreearea.foodbank.org)

### **Coming up and save the date**

---

Coffee in St Giles 1 September 2021

The Maplesteads WI 2 September 2021

Hedingham Heritage Society Essex in the News 2 September 2021

Gestingthorpe First Tuesday Book Club 7 September 2021

Gestingthorpe 'Gathering' 10 September 2021

Maplesteads Autumn Show 11 September 2021

Great Maplestead Carpet Bowls 13 September 2021

Little Maplestead Craft Fair 18 September 2021

Hedingham Heritage Society Walk around the Maplesteads 19 September 2021

Gestingthorpe 'Gathering' 24 September 2021

Great Maplestead Jumble Sale 25 September 2021

Little Maplestead Harvest Lunch 3 October 2021

## September Church Services

5th	9:30am	Little Maplestead - Holy Communion
	10:00am	Gestingthorpe – Family Worship
	11:00am	Great Maplestead - Holy Communion
12th	9:30am	Pebmarsh - Holy Communion
	11:00am	Great Maplestead - Family Service
	11:00am	Gestingthorpe - Holy Communion
19th	11:30am	Harvest Festival - Gestingthorpe (Bring a picnic)
25th	9:30am	Great Maplestead – Harvest Service
	9:30am	Little Maplestead Morning Worship
	10:00am	Gestingthorpe Family Worship
	11.00am	Pebmarsh Morning Worship
	4.00pm	Gestingthorpe Compline

Our churches remain open for private prayer on set days, please contact your churchwarden for times of opening.

### The Reverend Beverley Vincent

The Rectory, Church Street, Great Maplestead, CO9 2RG  
Tel 01787 460273 or 07944 200132. Khvicar@gmail.com

The copy deadline for the July magazine is **Friday 17 September 2021**

We need to know who, what, where and when .....

Submit your copy early to guarantee inclusion. Email me or our village reps.

#### Copy

Editor	Jenny Bishop	01787 472159	pmeditor@icloud.com
Gestingthorpe	Andy Craig	07970 395640	andy@mdamarketing.com
Gt Maplestead	Ann Harris	01787 462818	ann66harris@gmail.com
Little Maplestead	Beverley Bratley	01787 473281	beverley.bratley@gmail.com
Pebmarsh	Luke Brown	01787269082	lhwbrown@hotmail.co.uk

Parish News is printed by **Paul Clark Printing Ltd**  
Suite 6 . Enterprise House . Rippers Court . Sible Hedingham  
Halstead . Essex . CO9 3PY 01787 469628 [sales@paulclarkprint.co.uk](mailto:sales@paulclarkprint.co.uk)

This magazine is now available electronically on the parish council web sites and the Parish News website at [www.knights-hospitallers.org.uk](http://www.knights-hospitallers.org.uk)